







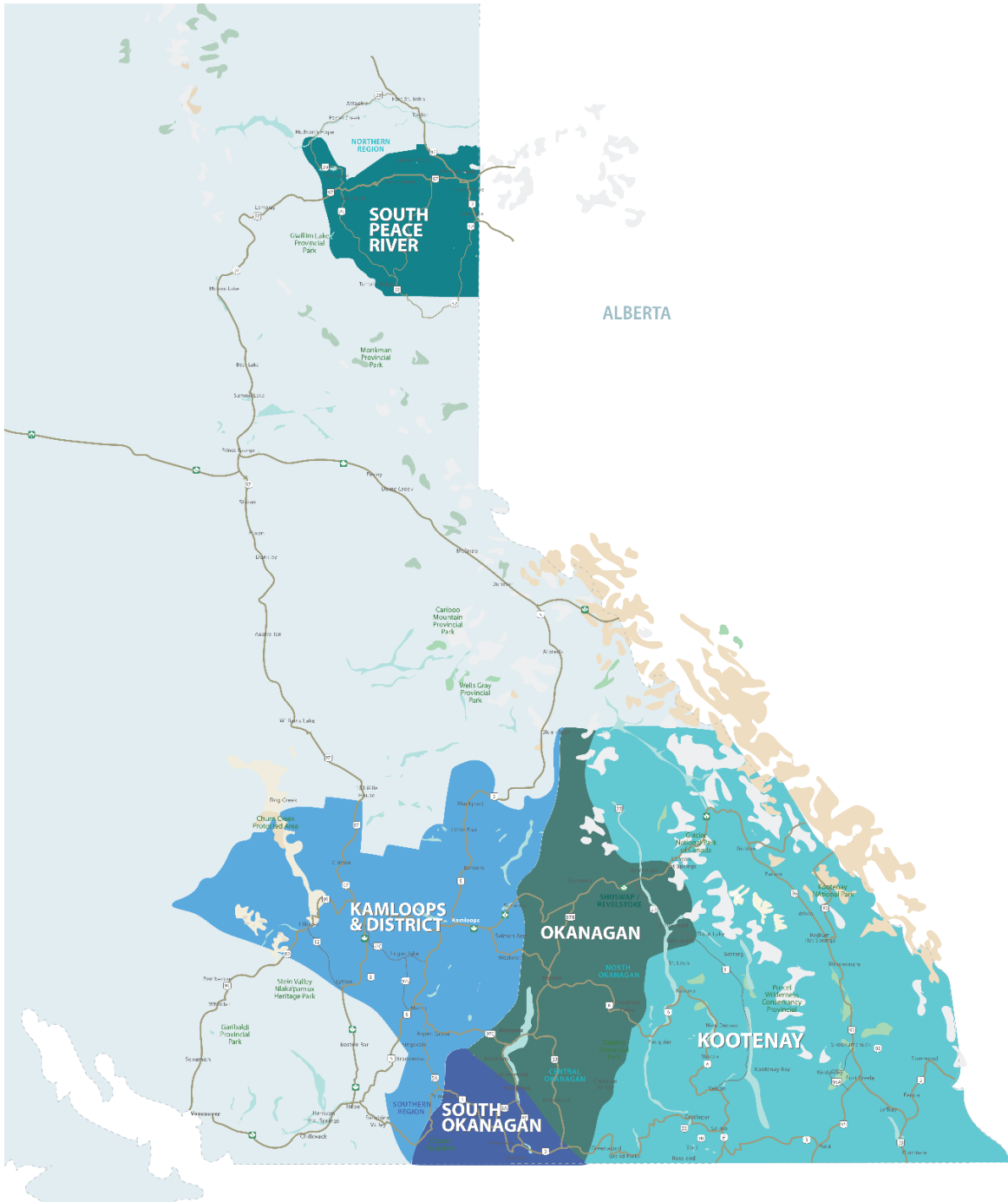
RESIDENTIAL SALES*
JUNE 2022
SUMMARY STATISTICS

	 Units Sold	 Dollar Volume (Millions)	 Active Listings	 New Listings
CENTRAL OKANAGAN	389 ↓-47.3%	\$338.0 ↓-42.3%	2,032 ↑69.1%	1,240 ↑36.1%
NORTH OKANAGAN	184 ↓-23.3%	\$141.4 ↓-9.5%	624 ↑26.1%	356 ↑17.9%
SHUSWAP / REVELSTOKE	99 ↓-23.3%	\$68.9 ↓-11.2%	529 ↑64.8%	247 ↑38.0%
SOUTH OKANAGAN	174 ↓-24.7%	\$115.2 ↓-16.8%	802 ↑29.6%	233 ↓-32.1%
SOUTH PEACE RIVER AREA	66 ↑22.2%	\$17.5 ↑21.7%	238 ↓-34.8%	22 ↓-77.1%
KAMLOOPS AND DISTRICT**	250 ↓-25.6%	\$166.7 ↓-11.0%	987 ↑33.0%	584 ↑15.2%
KOOTENAY	304 ↓-18.9%	\$154.6 ↓-7.9%	1,261 ↑14.8%	583 ↑12.1%
TOTAL ASSOCIATION	1,466 ↓-30.3%	\$1,002.3 ↓-24.5%	6,473 ↑33.7%	3,265 ↑14.2%

*Residential = Acreage, Duplex, Mobile Home, Recreational, Single Family, 3/4Plex, Apartment & Townhouse. Excludes Land

** Updated as of March 1, 2023

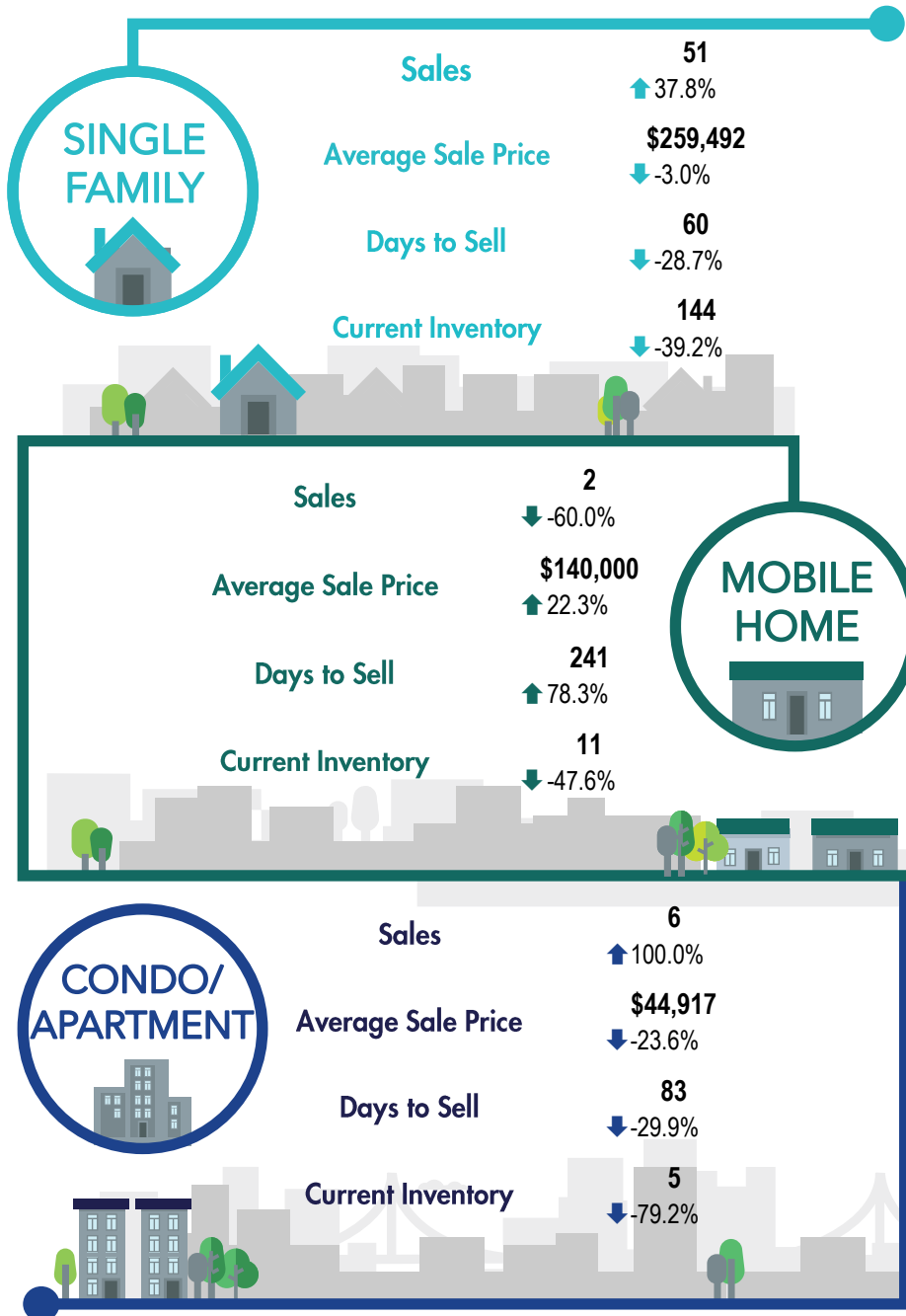
***Percentage indicate change from the same period last year



This map is for informational purposes. It does not represent an on-the-ground survey and represents only the approximate relative location of property boundaries.



SOUTH PEACE RIVER REGION



*The Association of Interior REALTORS® cautions that the average residential price is a useful figure only for establishing trends and comparisons over a period of time. It does not indicate an actual price for a home due to the wide selection of housing available over the vast geographic area.

**Percentage indicate change from the same period last year