







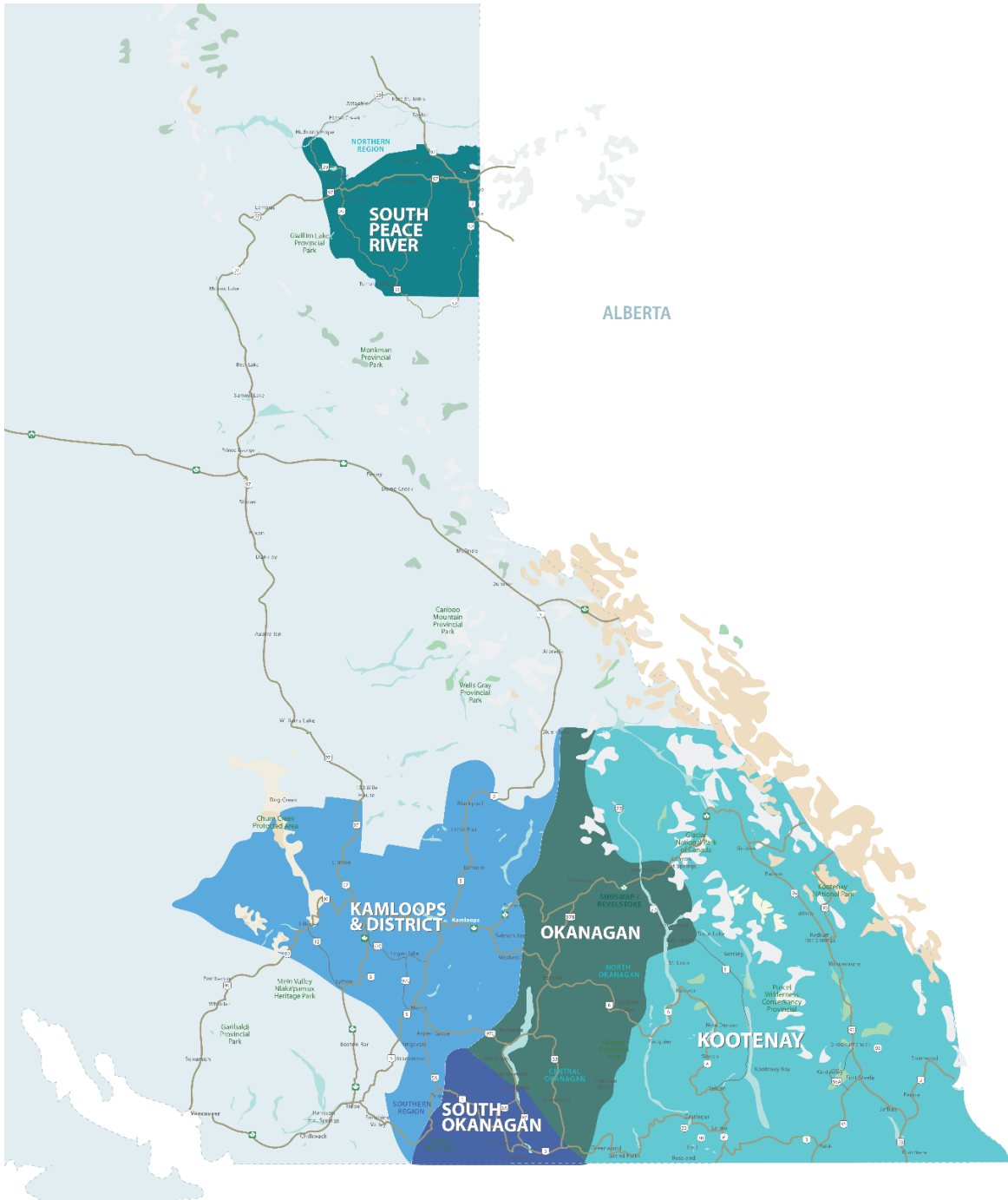
RESIDENTIAL SALES*
JULY 2022
SUMMARY STATISTICS

	 Units Sold	 Dollar Volume (Millions)	 Active Listings	 New Listings
CENTRAL OKANAGAN	298 ↓ -47.3%	\$252.1 ↓ -43.6%	2,186 ↑ 92.1%	896 ↑ 26.0%
NORTH OKANAGAN	158 ↓ -14.6%	\$108.8 ↓ -8.6%	677 ↑ 28.7%	296 ↑ 17.0%
SHUSWAP / REVELSTOKE	84 ↓ -28.8%	\$58.9 ↓ -26.7%	582 ↑ 83.6%	179 ↑ 28.8%
SOUTH OKANAGAN	148 ↓ -32.1%	\$96.3 ↓ -25.1%	817 ↑ 36.9%	157 ↓ -43.1%
SOUTH PEACE RIVER AREA	40 ↓ -24.5%	\$11.6 ↓ -13.9%	262 ↓ -27.6%	14 ↓ -85.7%
KAMLOOPS AND DISTRICT**	194 ↓ -38.6%	\$122.8 ↓ -29.3%	1,057 ↑ 55.4%	480 ↑ 32.6%
KOOTENAY	274 ↓ -18.7%	\$128.7 ↓ -17.7%	1,319 ↑ 14.7%	466 ↑ 0.9%
TOTAL ASSOCIATION	1,196 ↓ -33.3%	\$779.2 ↓ -30.4%	6,900 ↑ 44.7%	2,488 ↑ 8.1%

*Residential = Acreage, Duplex, Mobile Home, Recreational, Single Family, 3/4Plex, Apartment & Townhouse. Excludes Land

** Updated as of March 1, 2023

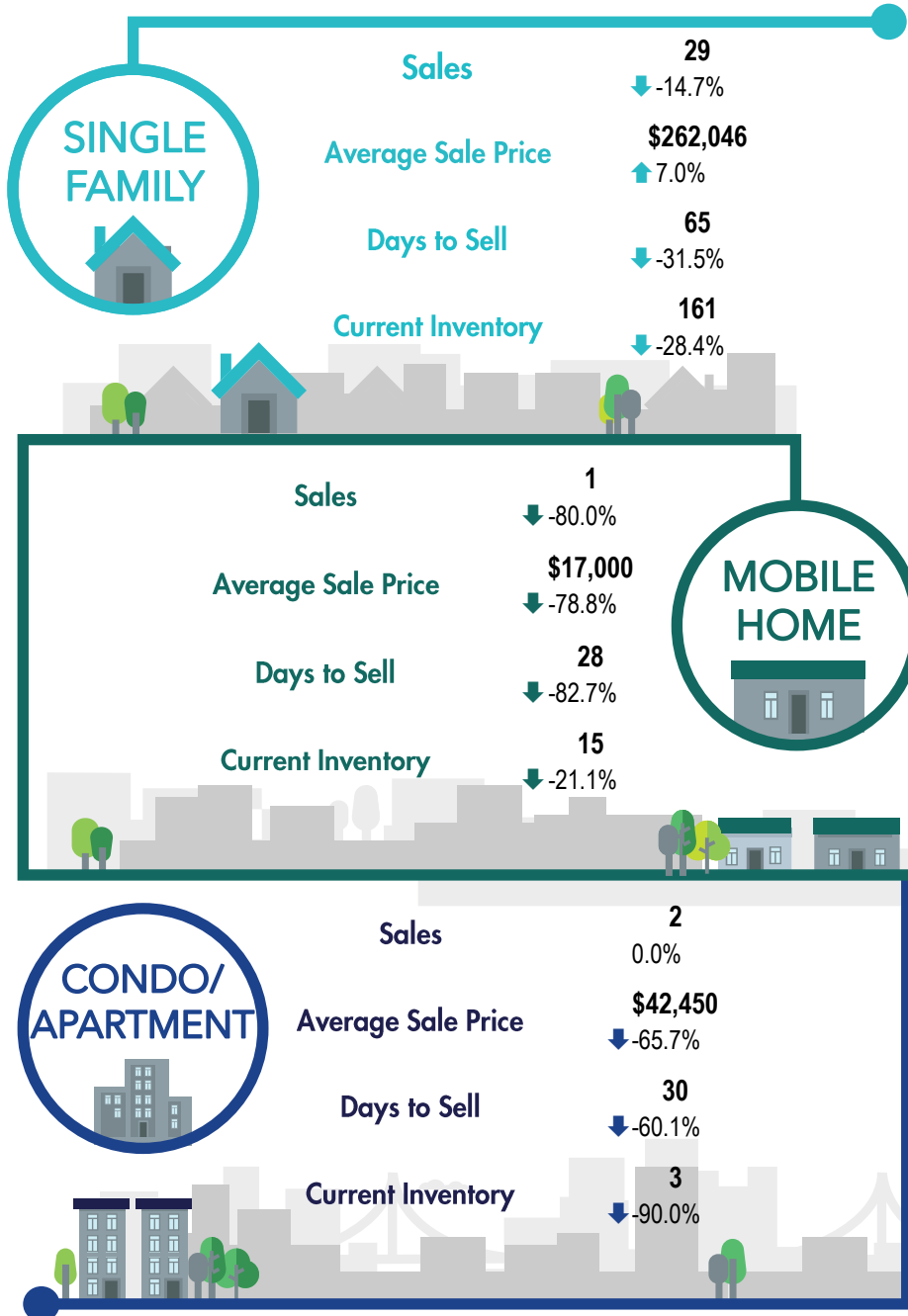
***Percentage indicate change from the same period last year



This map is for informational purposes. It does not represent an on-the-ground survey and represents only the approximate relative location of property boundaries.



SOUTH PEACE RIVER REGION



*The Association of Interior REALTORS® cautions that the average residential price is a useful figure only for establishing trends and comparisons over a period of time. It does not indicate an actual price for a home due to the wide selection of housing available over the vast geographic area.

**Percentage indicate change from the same period last year