







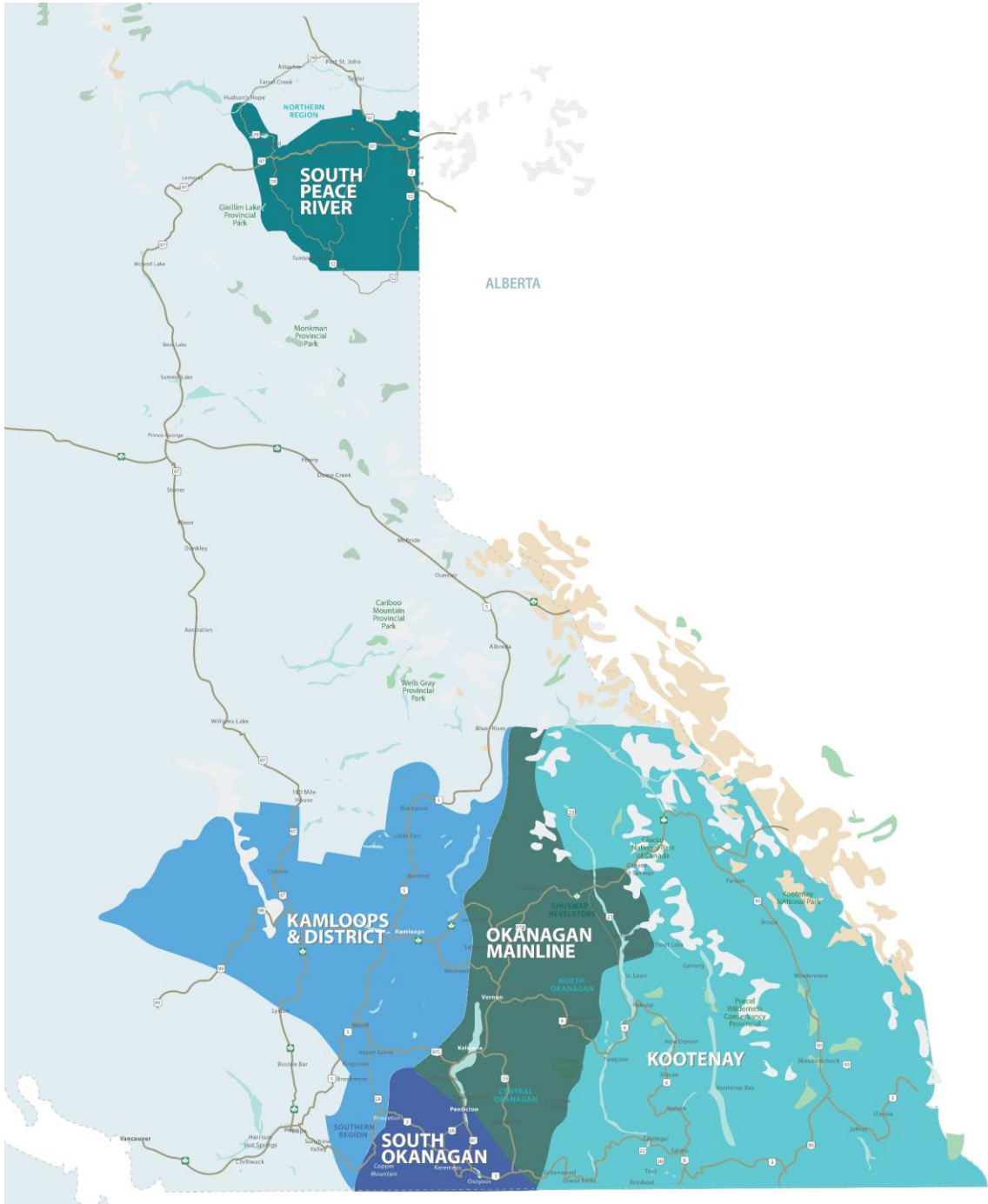
RESIDENTIAL SALES*
FEBRUARY 2022
SUMMARY STATISTICS

				
	Units Sold	Dollar Volume (Millions)	Active Listings	New Listings
CENTRAL OKANAGAN	559 ↓-13.2%	\$531.6 ↑17.8%	727 ↓-35.6%	690 ↓-12.3%
NORTH OKANAGAN	150 ↓-23.9%	\$109.6 ↓-2.9%	306 ↓-29.3%	230 ↓-0.4%
SHUSWAP / REVELSTOKE	80 ↓-15.8%	\$60.5 ↑14.8%	201 ↓-18.0%	93 ↓-14.7%
SOUTH OKANAGAN	161 ↓-33.7%	\$110.8 ↓-17.9%	358 ↓-43.8%	125 ↓-56.7%
SOUTH PEACE RIVER AREA	38 ↑31.0%	\$8.9 ↑16.3%	229 ↓-25.9%	11 ↓-76.1%
KAMLOOPS AND DISTRICT	287 ↓-2.0%	\$197.6 ↑30.3%	374 ↓-33.1%	362 ↑16.8%
KOOTENAY	241 ↓-14.8%	\$115.6 ↓-5.0%	657 ↓-16.6%	339 ↑2.7%
TOTAL BOARD	1,516 ↓-15.0%	\$1,134.7 ↑9.8%	2,852 ↓-30.4%	1850 ↓-12.0%

*Residential = Acreage, Duplex, Mobile Home, Recreational, Single Family, 3/4Plex, Apartment & Townhouse. Excludes Land

** Updated as of March 1, 2023

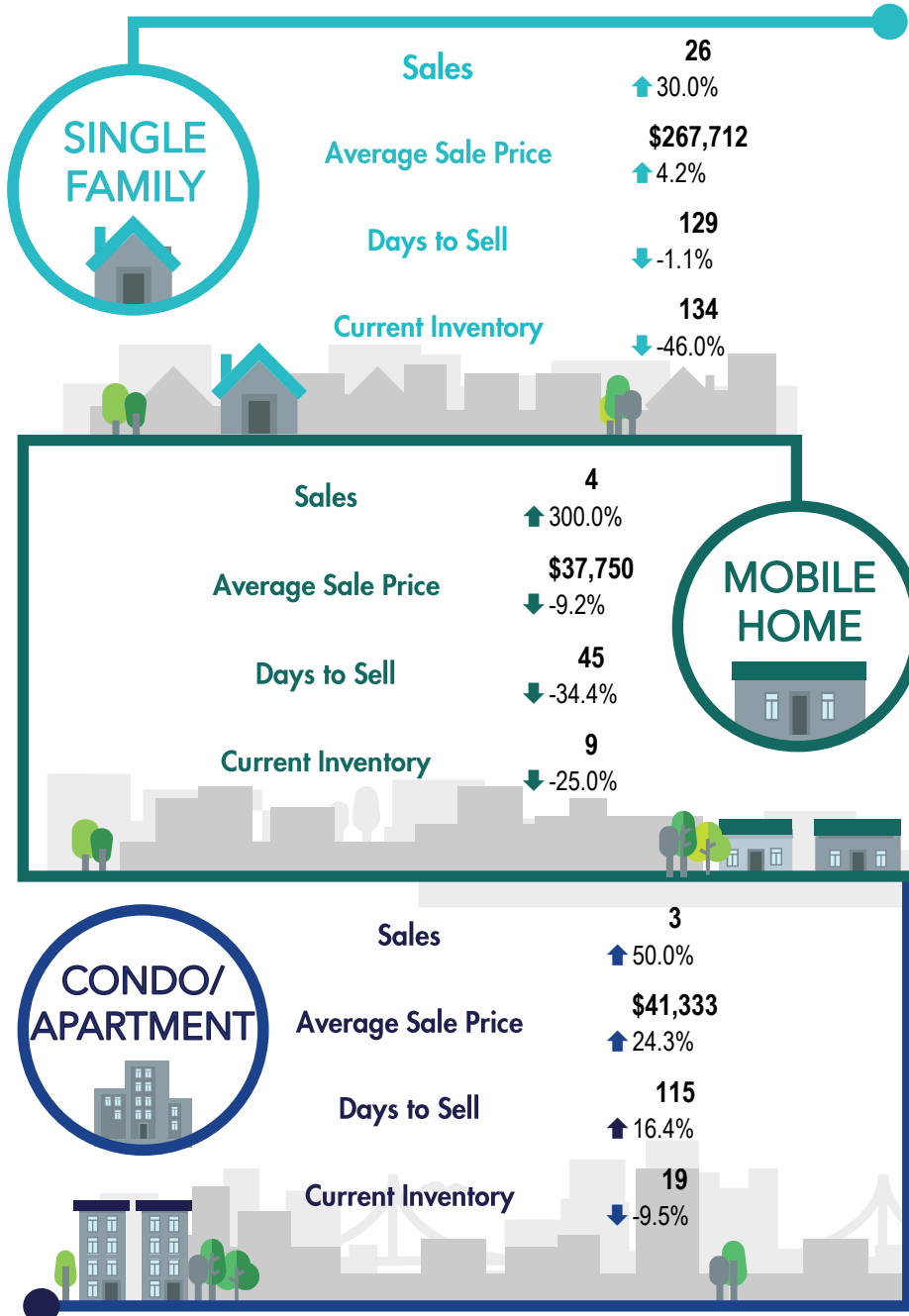
***Percentage indicate change from the same period last year



This map is for informational purposes. It does not represent an on-the-ground survey and represents only the approximate relative location of property boundaries.



SOUTH PEACE RIVER REGION



*Percentage indicate change from the same period last year