







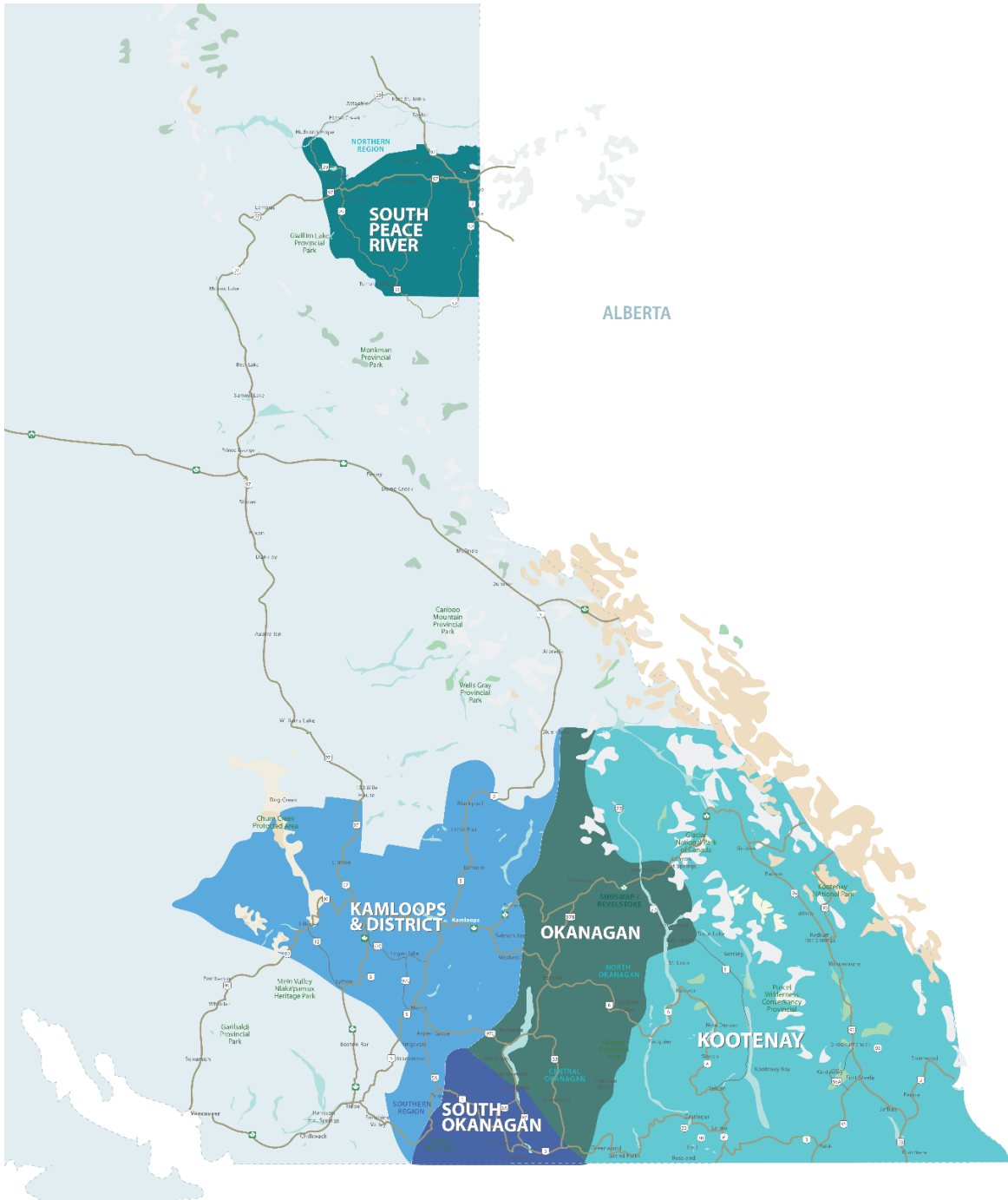
RESIDENTIAL SALES*
AUGUST 2022
SUMMARY STATISTICS

| |  Units Sold |  Dollar Volume (Millions) |  Active Listings |  New Listings |
|--------------------------------|--|--|---|--|
| CENTRAL OKANAGAN | 394 ↓-26.2% | \$331.3 ↓-21.0% | 2,195 ↑94.1% | 865 ↑21.5% |
| NORTH OKANAGAN | 142 ↓-34.0% | \$98.3 ↓-23.9% | 706 ↑49.9% | 270 ↑26.8% |
| SHUSWAP / REVELSTOKE | 86 ↓-23.9% | \$61.2 ↓-12.1% | 574 ↑88.2% | 136 ↑9.7% |
| SOUTH OKANAGAN | 135 ↓-36.6% | \$93.0 ↓-33.8% | 824 ↑31.0% | 186 ↓-37.4% |
| SOUTH PEACE RIVER AREA | 45 ↓-36.6% | \$12.5 ↓-45.9% | 258 ↓-26.5% | 22 ↓-72.2% |
| KAMLOOPS AND DISTRICT** | 165 ↓-42.5% | \$125.6 ↓-18.1% | 1,054 ↑55.9% | 391 ↑3.2% |
| KOOTENAY | 238 ↓-33.0% | \$96.2 ↓-41.7% | 1,361 ↑19.2% | 418 ↓-5.6% |
| TOTAL ASSOCIATION | 1,205 ↓-32.6% | \$818.2 ↓-25.6% | 6,972 ↑48.2% | 2,152 ↓-4.2% |

*Residential = Acreage, Duplex, Mobile Home, Recreational, Single Family, 3/4Plex, Apartment & Townhouse. Excludes Land

** Updated as of March 1, 2023

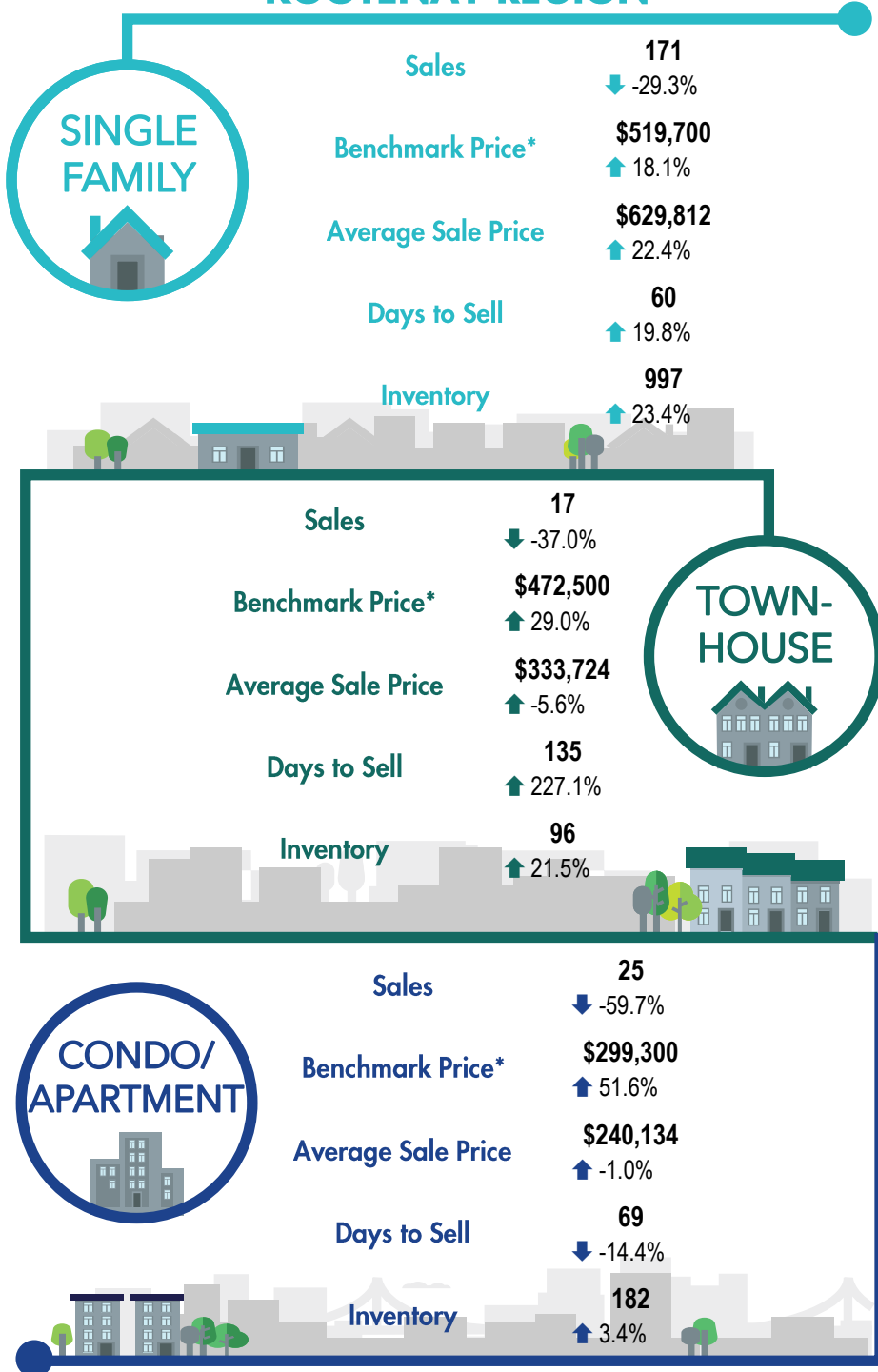
***Percentage indicate change from the same period last year



This map is for informational purposes. It does not represent an on-the-ground survey and represents only the approximate relative location of property boundaries.



KOOTENAY REGION



*Benchmark Price: Estimated sales price of a benchmark property. Benchmarks represent a typical property within each market.

**Percentage indicate change from the same period last year